

# AMA® PIPE WELDING TOOLS



**BETTER QUALITY**

**BETTER ERGONOMICS**

**BETTER PROFITABILITY**





# Pipe Purge Kit

## AMA® Pipe Purge Kit (20 000)

### User experience:

“The set is very functional. We particularly liked the flange welding set and the pulling balls.

However, the biggest saving comes from the fact that the silicone discs of the plug can be replaced one at a time.”



Silicone seals can be replaced individually

Includes flange welding kit

Pulling balls make pulling easier in elbows

Made in Finland

## AMA® Pipe Purge Kit

PRODUCT CODE 20 000

The AMA Pipe Purge Kit is an excellent aid to reduce inert gas use and purging time. This system uses triple silicon discs to form an airtight seal.

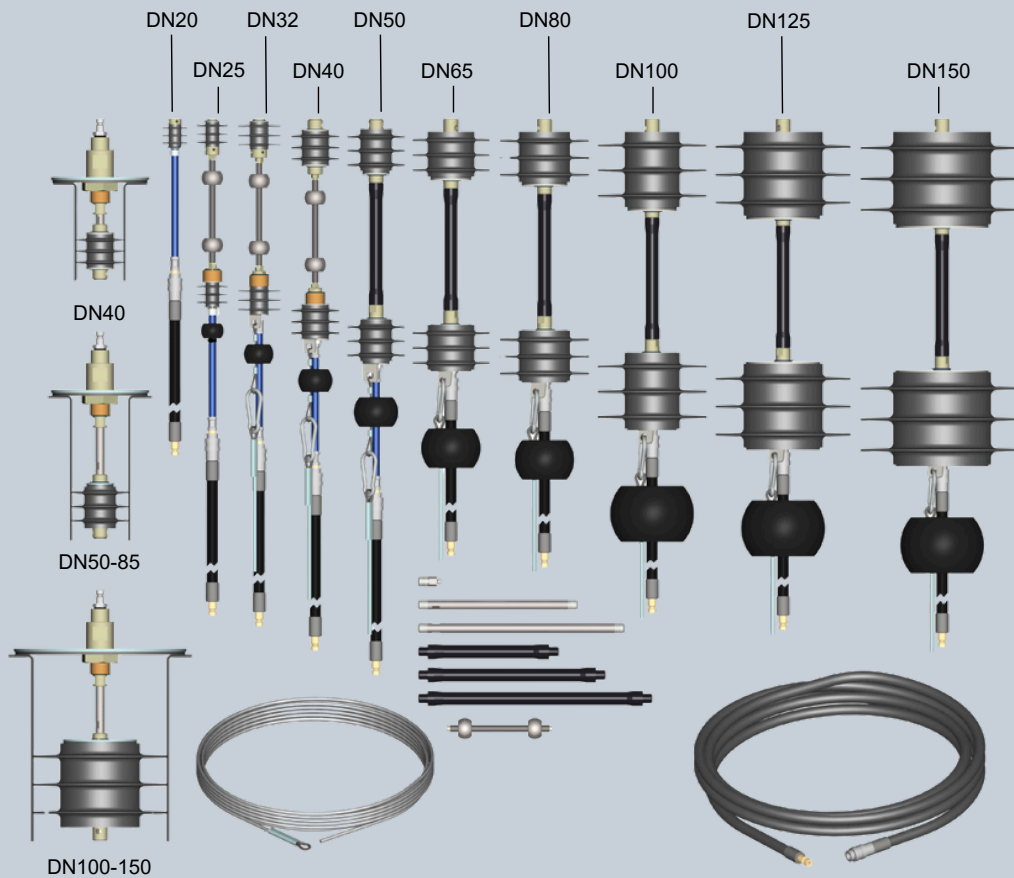
- The kit includes silicone purge plugs, sizes DN20 (3/4") – DN150 (6")
- The carry case also includes a flange welding kit DN40 (1 1/2") – DN150 (6")
- Pulling balls make it easier to pull the plugs through pipe bends
- Each silicone seal can be replaced separately from the triple silicone plugs
- Heat resistance 300 °C
- Weight 16 kg



# Pipe Purge Kit



## AMA® Pipe Purge Kit applications



## AMA® Pipe Purge Kit contents:

Inlet plug, heat resistance 300 °C DN20, DN25, DN32, DN40, DN50, DN65, DN80, DN100, DN125, DN150 (Pulling ball included in sizes DN25–DN50)	
Outlet plug, heat resistance 300 °C DN25, DN32, DN40, DN50, DN65, DN80, DN100, DN125, DN150	
Adapter M5/M10 for DN40 flange welding Connection 100 mm M10 for flange welding kit	
Flange purge plate, heat resistance 250°C	DN40 - DN80
Flange purge plate, heat resistance 250°C	DN100 - DN150
Solid connection M10	150 mm
Solid connection M10	200 mm
Flexible connection M10	150 mm
Flexible connection M10	200 mm
Flexible connection M10	250 mm
Flexible connection M5 with guiding balls	135 mm
Gas hose with coupling	8 m
Pulling wire isolated, incl. lock	10 m
Pulling ball	DN65 - DN80
Pulling ball	DN100 - DN150
Accessory box for small parts	





# HD Rotator Set



AMA® HD Rotator 6010

AMA® HD Table 6020

## New boost for rotating pipes: AMA® HD Rotator and AMA® HD Table

Handle pipes effortlessly, even big ones!

Motorized pipe rotating device is a compact innovation for the prefabrication of pipes. With the patented AMA® HD Rotator, even large pipes can be rotated easily and ergonomically.

Motorized rollers rotate pipes with diameters up to 1,000 mm.

The rotator is powered by mains electricity. Grip is ensured by tightening the roller strap and the rotation speed can be adjusted with a pedal or the potentiometer of the control unit.

AMA® HD Rotator is easy to move thanks to its wheels, and the non-motorized AMA® HD Table is available for it as an auxiliary pipe stand. In both devices, the pipe is lifted and lowered easily with a hydraulic pump.

With the AMA® HD product family, you can easily customize the operations of your prefabrication workshop for different projects. Easy and efficient, right?





**AMA® HD Rotator 3-piece Set (6030)**  
Includes: 6010 Rotator, 6020 Table, 6040 Support  
Max load of the set 3900 kg

PATENTED



**AMA® HD Rotator**  
Max load 1500 kg  
Product code 6010



**AMA® HD Table**  
Max load 1500 kg  
Product code 6020



**AMA® HD Support**  
Max load 900 kg  
Product code 6040





# HD Rotator Set

## AMA® HD ROTATOR (6010)

Motorized, easy-to-move, heavy duty pipe rotator

- For pipe diameters of 100 - 1,000 mm
- Mains operation
- Ergonomic working position
- Height is adjusted manually with a hydraulic pump
- Space-saving, easy to move on wheels
- Stands firmly on legs during use
- Good grip thanks to a roller belt, which keeps the pipe firmly against the rotator wheels
- Speed can be controlled from a pedal or the potentiometer of the control panel
- The direction of pipe rotation is selected with foot pedals
- Pull-out rack for angle grinder

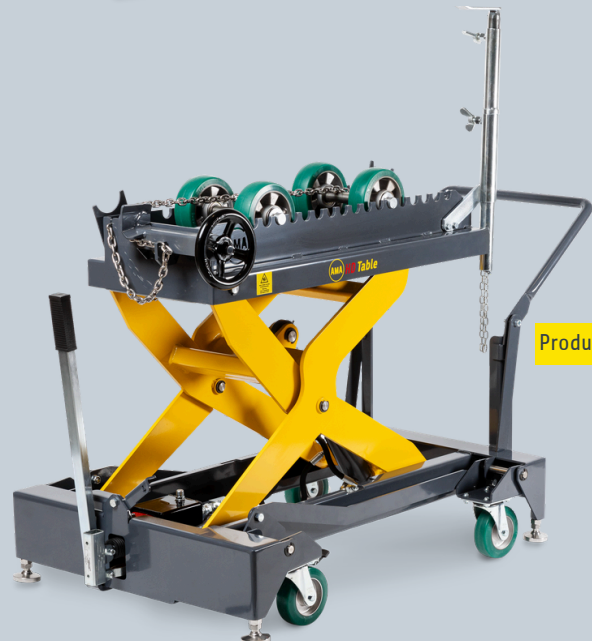


Product code 6010

## AMA® HD TABLE (6020)

Heavy duty hydraulic manual roller table

- Non-motorized pipe stand
- For pipe diameters of 100 - 1,000 mm
- Great auxiliary stand when using the HD Rotator
- Pipes rotate smoothly on rubber wheels
- Equipped with fastener chain, which enables independent use without a motorized rotator as well
- Height is adjusted manually with a hydraulic pump
- Ergonomic working position
- Space-saving, easy to move on wheels
- Stands firmly on legs during use
- Pull-out rack for angle grinder



Product code 6020

## AMA® HD SUPPORT (6040)

Sturdy galvanized pipe stand with ball casters

- Convenient auxiliary stand for use with AMA® HD rotators
- For pipe diameters of 100 - 1,200 mm
- Pipes rotate smoothly on stainless steel ball casters
- Height can be adjusted even with a pipe on it
- Easy to move by tilting on the wheels



Product code 6040

# HD technical specifications



## AMA® HD ROTATOR

PRODUCT CODE 6010

Motorized pipe rotator

- Mains power 240 V (also available for 110 V)
- Maximum load capacity 1,500 kg
- Weight 200 kg
- Torque of rotator wheel 240 Nm
- Motor information:
  - Current: 4,7 A
  - Power: 1000 W
  - Voltage: 100-240 V (Also available with a 110 V plug)
  - Frequency: 50/60 Hz
- Patented, CE marked, manufactured in Finland
- Maintenance and spare parts service available
- Height adjustment range 440 - 870 mm (from the bottom of the pipe)
- 1 year warranty for defects in workmanship or materials



Product code 6010

## AMA® HD TABLE

PRODUCT CODE 6020

Hydraulic pipe rotator table without a motor

- Maximum load capacity 1,500 kg
- Weight 170 kg
- Patented, CE marked, manufactured in Finland
- Maintenance and spare parts service available
- Height adjustment range 440 - 870 mm (from the bottom of the pipe)
- 1 year warranty for defects in workmanship or materials



Product code 6020

## AMA® HD SUPPORT

PRODUCT CODE 6040

Auxiliary stand for pipe rotating

- Maximum load capacity 900 kg
- Weight 43 kg, galvanized frame
- Stainless steel ball casters (diameter 45 mm) are moved in slots according to pipe size
- Manufactured in Finland, spare parts service available
- Height adjustment range 380 - 870 mm (from the bottom of the pipe)
- 1 year warranty for defects in workmanship or materials



Product code 6040



# AMA Roller® Pipe Rotators

## AMA Roller® Standard (7010)



Product code 7010

- Foot pedal operation
- Speed control and direction change from the control panel

## AMA Roller® Premium (7070)



Product code 7070

- Wireless control, range 25 m
- The rotation speed can be adjusted either by foot pedal or speed control knob

## AMA Roller® Pipe Rotator

Efficient and compact pipe rotator which is suitable for both construction sites and prefabrication workshops. The AMA Roller® rotates pipes at the selected speed.

- Increases the speed and efficiency of a pipe welder's work
- Improves the quality of the welding seam and reduces differences in skill levels between different welders
- Improves ergonomics
- Reduces starts and stops
- Increases the profitability of welding work
- Maximum rotating load 30 Nm
- Suitable for all manual welding methods: MIG, MAG, TIG and MMA





Improves the quality of the welding seam

Improves efficiency by up to 30%

Ergonomic welding position

PATENTED



## Specifications

- Patented and CE-marked
- Weight 52 kg
- Nominal voltage 220/230 V
- Current 0.9 A
- Frequency 50/60 Hz
- Power 100 W
- Diameter range of pipes to be rotated 30-500 mm
- Maximum rotation load 30 Nm
- Maximum rotation speed 1.25 m/min

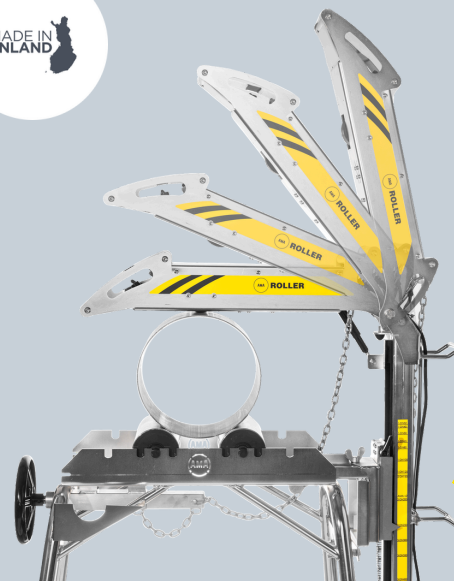




## AMA Roller® Pipe Rotator

The AMA Roller® rotates pipes when:

- You tack-weld
- You weld even difficult materials
- You clean the base
- You brush a stainless steel seam
- You use an angle grinder to cut



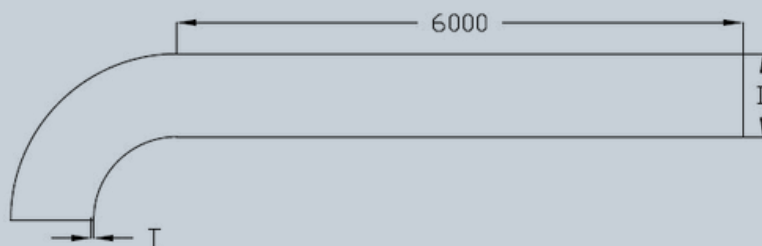
Easy to turn to a vertical position

Attachment with quick fasteners to the A stand



Light and easy to move

Examples of AMA Roller® maximum rotational load (30 Nm) with curve:



Example: pipe 6 m + curve (curve radius = 1.5 x pipe diameter)

<u>Pipe diameter (D):</u>	<u>Max wall thickness (T):</u>
30 - 300 mm	10 mm
350 mm	8 mm
400 mm	6 mm
500 mm	4 mm





## The AMA product family in professional use year after year

"Our company has been using AMA products for a long time, and over the years, our selection has expanded into a comprehensive range of professional tools. AMA products are in constant use in our operating environment, and we utilize the product family in a variety of production tasks.

In demanding industrial environments, the quality of work must always be top-notch –and that is only possible with high-quality professional tools. Our close collaboration with the AMA team continues, and we will remain at the forefront of testing new innovations and development initiatives in a practical work environment. This enables continuous improvement and the joint development of solutions."

**Joonas Myllymäki, Fineweld Oy**



## We haven't found anything else that's as good

"The AMA Roller pipe rotator is particularly good – we haven't found a comparable product elsewhere that is as easy to use and durable. The device increases work efficiency, accuracy, and quality, and improves work ergonomics. We also use the AMA Pipe Stand Set, Centering Collars, and Collar Tighteners, where the most important purchase criteria are quality, functionality, and durability. It's also great that AMA products are actively being developed."

**Eetu Sorvoja, LC Partners Oy**



## Fast, efficient and accurate

"AMA products enable an ergonomic working position. The products are adjustable, which means you can do almost anything with them. These tools make work quick, efficient and accurate!"

**Lars Nyberg, Wellco Welding AB**

## We don't go anywhere without AMA equipment

"Overall, AMA products improve the efficiency of work by up to tens of percents. At all of our construction sites, our professionals use the AMA Pipe Stand set all the time in both prefabrication and pipeline construction.

Basically, we don't go anywhere without them."

**Jari Kytöaho, Majek Oy / Northpipe Oy**



## Just sit down and weld away

"With AMA, you have the energy and ability to do precision welding more efficiently and for a longer time. Thanks to AMA pipe welding products, the quality of our workmanship is very high, and the products are also great for industrial pipelines that remain exposed and visible after installation."

**Kauko Berg, K.B-Welding Oy**

## AMA Roller Boosts Welding Production

"Simply put, AMA Roller makes our welding and installation work easier and more productive. I have measured and calculated that it improves our welding production by up to 30% annually."

**Paul Heiskanen, KPH Tech Oy**



# Pipe Welding Stands

## AMA® Pipe Stand Set (2040)

Including stands A 1010, B 1020 and C 1030

Stable and durable

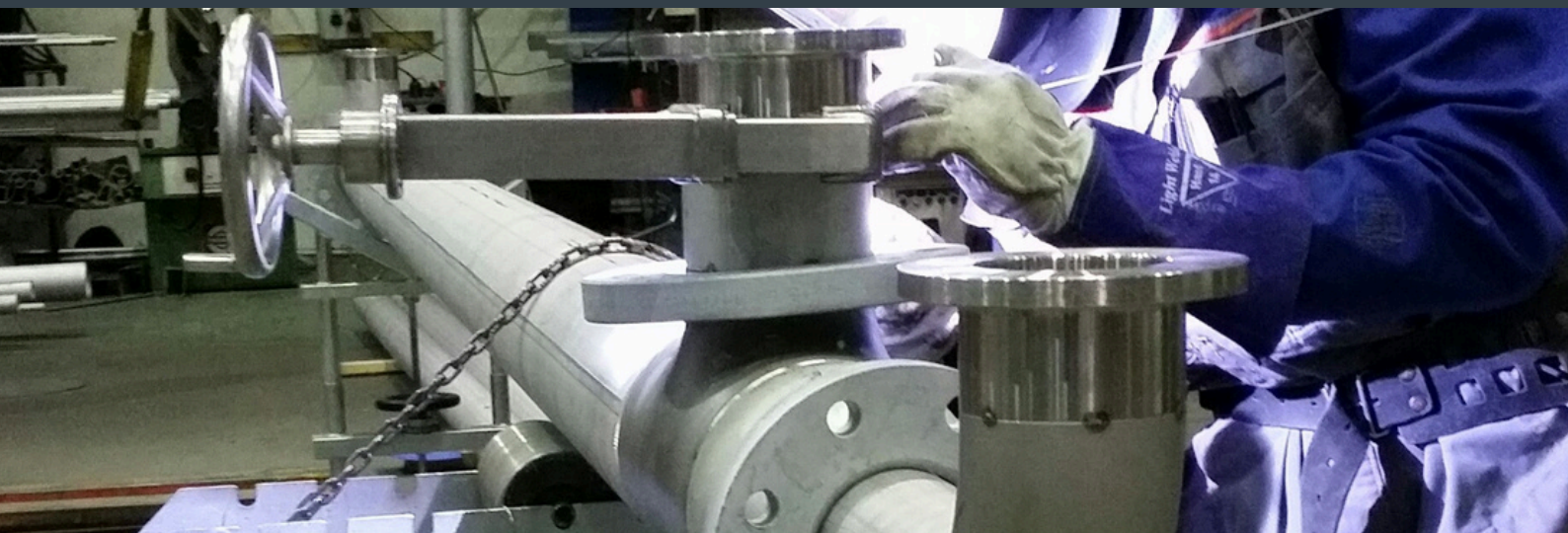
Ergonomic working position

Pipe Stand C 1030

Pipe Stand B 1020

Pipe Stand A 1010

- Stable, durable and mobile pipe stands
- Adjustable heights
- Galvanised frames and frame components



Stainless  
tensioning  
chain



Pipe Stand A 1010

Stainless  
rolls are moved  
according to  
diameters of  
pipes

- AMA® PIPE WELDING STAND A (1010)**
- Stainless steel rolls
  - Stainless steel tensioning chain
  - Adjustable height: 840-1100 mm
  - Maximum load-bearing capacity 1,500 kg
  - Application with chain tensioning: 15 - 720 mm pipes
  - Application without chain tensioning: 700-1000 mm pipes
  - Weight 29kg

Pipe Stand B 1020



Stainless balls are  
moved according  
to diameters  
of pipes

- AMA® PIPE WELDING STAND B (1020)**
- Stainless steel ball rollers
  - Adjustable height: 800-1100 mm
  - Maximum load-bearing capacity 560 kg
  - Application: pipe sizes 15 - 720mm
  - Weight 14.5 kg

Pipe Stand C 1030



Convenient  
pipe support

- AMA® PIPE WELDING STAND C (1030)**
- Auxiliary pipe support
  - Adjustable height: 800-1200 mm
  - Adjustable height also when the pipe is on the stand
  - Maximum load-bearing capacity 560 kg
  - Application: pipe sizes 15 - 720 mm
  - Weight 7.5 kg



# Accessories for AMA Pipe Stand A

## AMA® Rubber Wheel Set (4011)

- Set includes two pairs of rubber wheels
- Load capacity 1500 kg
- Makes work smoother when the longitudinal seam of the pipe is high or the pipe surface is uneven
- Material: rubber
- Heat resistance 100°C
- Weight 3,2 kg / set
- Wheel diameter 100 mm



## AMA® Shelf for Stand A (4020)

- For storing tools and accessories
- Galvanized steel
- Weight 3 kg



## AMA® Purge Gas Turntables

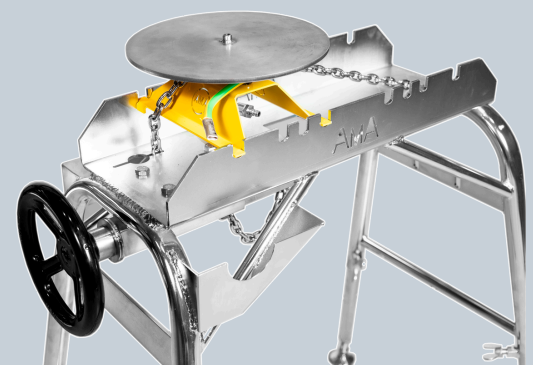
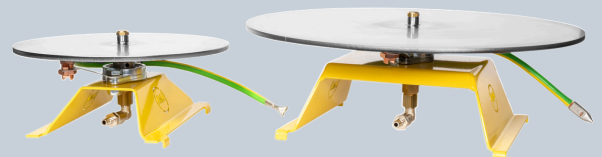
- The hand-rotated gas welding table facilitates and speeds up the welding of short pipe parts.
- Gas supply from the center of the tabletop
- Grounding mechanism
- Round tabletop of stainless steel, rotates on ball bearings
- Max load 100 kg
- Can be placed in the slots of the A-stand or on a table

### Purge Gas Turntable 200 (4030)

- For pipes up to DN200 (8") in size
- Weight 4 kg

### Purge Gas Turntable 400 (4040)

- For pipes up to DN400 (16") in size
- Weight 9 kg



# Accessories

## for AMA Pipe Stand B and Centering Collars



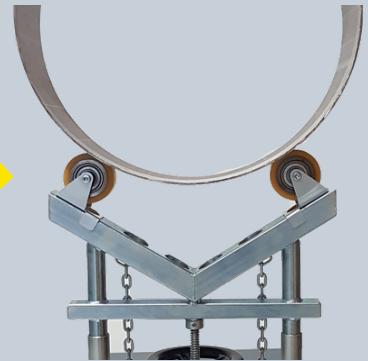
### AMA® Polyurethane Wheels for Pipe Stand B

Plain bearing (4008)

Ball bearing (4009)

- Also includes storage hooks that can be mounted on the stand
- Load capacity 560 kg / pair of wheels

Does not scratch pipe



Product codes 4008 ja 4009

### Stainless Steel Ball Roller for AMA® Pipe Stand B

PRODUCT CODE 4003

- Load capacity 280 kg / ball roller (560 kg / ball pair)

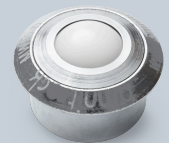
### Plastic ball roller for AMA® pipe stand B

PRODUCT CODE 4013

- POM plastic ball
- Load capacity 25 kg / plastic ball (50 kg / pair of balls)



Product code 4003



Product code 4013

### AMA® Counterweight System for AMA Centering Collars (4000)

Includes:

- Counterweight tensioner: fitted with thrust bearings
- Weights: galvanized steel, ca. 9 kg/weight (4 weights)
- Carrying case for weight

The counterweight system makes it easy to install and weld heavy pipes with elbows and projecting parts.

- Total weight 43 kg
- Requires AMA® Centering Collars, sold separately

Product code 4000



Quick to install with AMA® Collars



Makes it easier to handle pipes with elbows and projecting parts

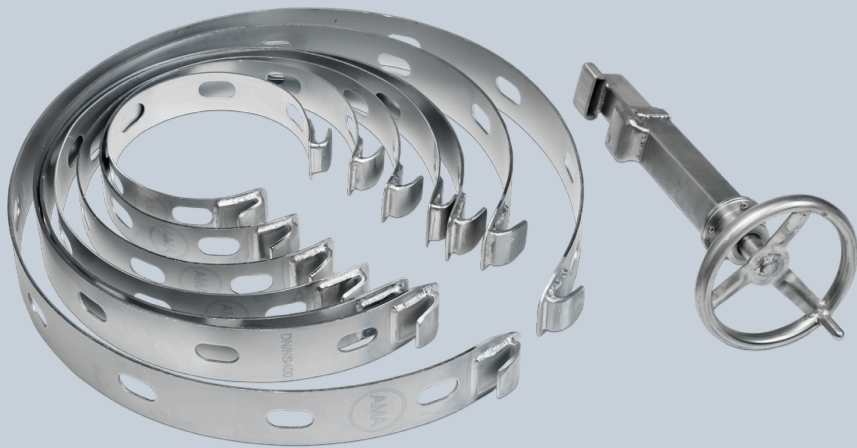




# Centering Collars

## AMA® Basic Centering Collar Set DN150 - DN500 (6"-20")

Product code 3040



## AMA® Mini Centering Collar Set DN65 - DN125 (2.5"-5")

Product code 3060



## AMA® Centering Collars

Extremely quick, accurate and easy-to-use stainless steel centering collars for pipes. Reduces installation and welding errors to a minimum.

## AMA® Basic Centering Collar Set

PRODUCT CODE 3040

- Includes 7 pcs collars and one collar tightener
- Includes the following collars:  
DN150, DN200, DN250, DN300,  
DN/NS 350, DN/NS 400 and DN/NS 500
- Includes AMA Basic Tightener (3010)
- Material: Stainless steel

## AMA® Mini Centering Collar Set

PRODUCT CODE 3060

- Includes the collars DN65, DN80, DN100  
and DN125
- Includes AMA Mini Tightener (3030)
- Includes AMA Collar Holder for toolbox (3050)
- Material: Stainless steel



# Centering Collar Tighteners



## AMA® Collar Tighteners

A collar tightener is used to tighten the collar so that centering the pipes is as accurate as possible.

Boost your productivity by optimizing your work methods and tools



### AMA® Mini Tightener (3030)

For pipes: DN65-DN125

### AMA® Basic Tightener (3010)

For pipes: DN150-DN500

### AMA® Large Tightener (3020)

For pipes: DN600-DN1500

#### AMA® MINI COLLAR TIGHTENER (3030) PRODUCT CODE 3030

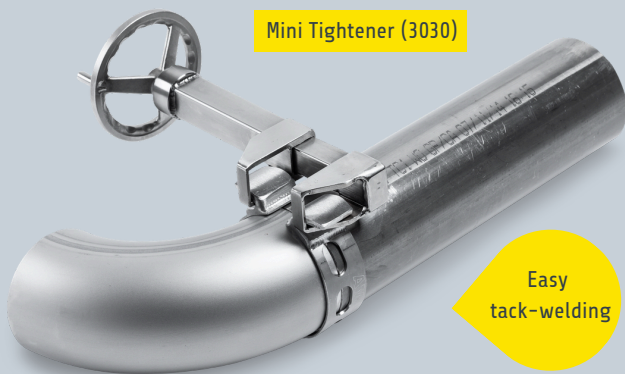
- Material: stainless steel
- Thrust bearings
- For collar sizes DN65 - DN125 (2.5"-5")
- Weight 0.9 kg, light to handle
- Small and convenient collar tightener on the side

#### AMA® BASIC COLLAR TIGHTENER (3010) PRODUCT CODE 3010

- Material: stainless steel
- Thrust bearings
- For collar sizes DN150 - DN/NS 500 (6"-20")
- Weight 2.3 kg

#### AMA® LARGE COLLAR TIGHTENER (3020) PRODUCT CODE 3020

- Material: stainless steel
- Thrust bearings
- For collar sizes DN/NS 600 (24") and larger ones
- Weight 2.4 kg
- 50 mm longer tensioning length



Easy tack-welding

Makes installation quicker





# Centering Collar sizes

Choose a suitable AMA® centering collar here:

Product code	DN size	Inch size	AMA Centering Collars:	Pipe Ø	Pipe Ø
				Min mm	Max mm
1065	65	2,5"	DN65 Stainless steel collar with hinge	73	82
1080	80	3"	DN80 Stainless steel collar with hinge	85	90
1100	100	4"	DN100 Stainless steel collar	110	120
1125	125	5"	DN125 Stainless steel collar	138	145
1150	150	6"	DN150 Stainless steel collar	165	175
1200	200	8"	DN200 Stainless steel collar	215	225
1250	250	10"	DN250 Stainless steel collar	270	285
1300	300	12"	DN300 Stainless steel collar	320	330
1350	350	14"	DN/NS 350 Stainless steel collar	354	365
1400	400	16"	DN/NS 400 Stainless steel collar	400	420
1450	450	18"	DN/NS 450 Stainless steel collar	445	465
1500	500	20"	DN/NS 500 Stainless steel collar	500	520
1600	600	24"	DN/NS 600 Stainless steel collar, two-part	600	630
1700	700	28"	DN/NS 700 Stainless steel collar, two-part	700	730
1800	800	32"	DN/NS 800 Stainless steel collar, two-part	800	830
1900	900	36"	DN/NS 900 Stainless steel collar, two-part	900	930
11000	1000	40"	DN/NS 1000 Stainless steel collar, two-part	1000	1030
11100	1100	44"	DN/NS 1100 Stainless steel collar, two-part	1100	1130
11200	1200	48"	DN/NS 1200 Stainless steel collar, two-part	1200	1230
11300	1300	52"	DN/NS 1300 Stainless steel collar, two-part	1300	1330
11400	1400	56"	DN/NS 1400 Stainless steel collar, two-part	1400	1430
11500	1500	60"	DN/NS 1500 Stainless steel collar, two-part	1500	1530

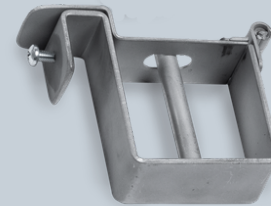
Product code	AMA Centering Collars with NS measurements:	Pipe Ø	Pipe Ø
		Min mm	Max mm
1100NS	NS100 Stainless steel collar with hinge	100	110
1125NS	NS125 Stainless steel collar	125	137
1150NS	NS150 Stainless steel collar	150	165
1200NS	NS200 Stainless steel collar	200	215
1250NS	NS250 Stainless steel collar	250	265
1300NS	NS300 Stainless steel collar	300	315

Note! AMA® Collars from size 350 are suitable for both NS and DN dimensioning.

## AMA® Collar Holder for toolbox

PRODUCT CODE 3050

The collar holder allows collars and the collar tightener to be conveniently hung on the outside of the toolbox. The holder is locked when the lid of the toolbox is locked.



Product code 3050



### AMA® Centering Collar types:



#### HINGED COLLARS

- Sizes DN65, DN80 and NS100
- Required tightener: 3030

#### ONE-PART COLLARS

- Sizes DN100-DN500 and NS125-NS300
- Required tighteners: 3030, 3010

#### TWO-PART COLLARS

- Sizes DN/NS 600 - DN/NS 1500
- Required tightener: 3020 (2 pcs)



# Pipe Bridge Stand and Table Stand



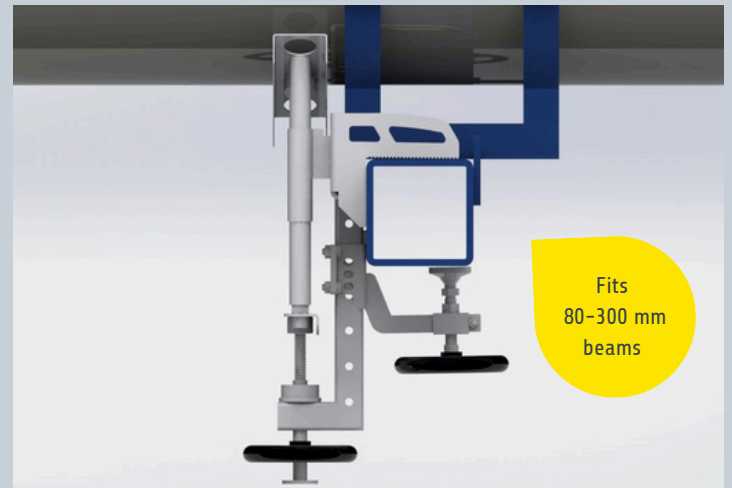
## AMA® Pipe Bridge Stand

PRODUCT CODE 6500

- Pipe bridge stands equipped with stainless steel ball rollers make it easier to push and rotate pipes inside pipe bridges.
- The pipe is lifted above the supports using the pipe bridge stands, allowing it to roll smoothly over the stainless steel ball casters.
- The stand is suitable for beams with a thickness of 80–300 mm.
- Suitable for pipe diameters: 15–720 mm
- Ball casters: Stainless steel, diameter 30 mm
- Load capacity of a single pipe bridge stand: 380 kg
- Weight: 12 kg



## AMA® Pipe Bridge Stand



## AMA® Table Pipe Stand with stainless steel ball rollers

PRODUCT CODE 4010

- A table-mounted pipe stand that makes it easy to handle pipes.
- Ball rollers: Stainless steel, diameter 30 mm
- Weight: 4.2 kg





*"The AMA Roller boosts our production efficiency by as much as 30%"*

*"The AMA Roller sped up our manual welding production significantly"*

*"AMA products are designed for demanding use by professionals, and are durable and easy to move"*

**AMA**

*"With AMA pipe welding products, your work is high-quality, safe, and efficient"*

*"AMA tools enable ergonomic working positions"*

*"AMA products are high-quality and durable."*

Learn more:



© 2026 AMA® Pipe Tools



**Manufacturer:**  
Welner Oy, Finland  
[www.amapipetools.fi](http://www.amapipetools.fi)